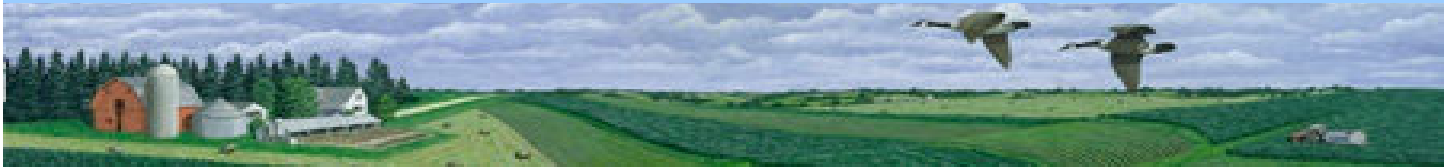


BLACK CREEK WATERSHED COALITION



BLACK CREEK WATERSHED STATE OF THE BASIN REPORT

Newsletter No. 1

Date: October 18, 2002

PROJECT INFORMATION

Black Creek Watershed Coalition

The inter-municipal Black Creek Watershed Coalition was formed to work cooperatively in overseeing the development of the Black Creek Watershed Plan. The first environmental planning initiative will be to assist a consultant in the preparation of a “state-of-the basin” report.

Purpose and Project Description

Inter-municipal watershed planning began in Monroe County with the Rochester Embayment Remedial Action Plan (RAP). In 1987 the U.S./Canada Great Lakes Water Quality Agreement required “Areas of Concern” to prepare RAPs. The Rochester Embayment was named as an Area of Concern and its RAP, completed in 1997, was developed by representatives of the six counties that share the Genesee River/Rochester Embayment watershed. Since 1997, Monroe County has participated in watershed planning for smaller local watersheds, such as Irondequoit Creek, Northrup Creek/Long Pond, Oatka Creek and the North Chili Tributary of Black Creek.

The planning group for the North Chili Tributary of Black Creek recommended initiating planning for the greater Black Creek watershed. At a “Caring for Creek” Symposium in the spring of 2000, participants who live and work in the Black Creek watershed identified problems in the watershed, resources that should be preserved and persons, agencies and organizations that should be involved in preparation of a watershed plan.

On behalf of the Black Creek watershed, Monroe County applied for and received a Watershed Assistance Grant (WAG) from River Network, a national river and watershed conservation organization. The U.S. Environmental Protection Agency supports the WAG program. The grant made possible a six-hour Black Creek Watershed Symposium and the formation of the Black Creek Watershed Coalition (BCWC). The first meeting of the Coalition was held on April 11, 2002. The grant also supports hiring a Consultant to prepare a State of the Basin Report, the distribution of newsletters and the creation of a website. The state-of-the-basin report will be the first volume of a Black Creek watershed plan.

Purpose Of the State of the Basin Report

This State of the Basin Report will comprise an evaluation of the Black Creek Watershed, which will:

- Characterize the watershed with regards to its unique features, such as its geographical setting and physical or cultural characteristics including topography, geology, vegetation, wildlife, land uses, water quality, and hydrology
- Identify resources of value within the watershed
- Analyze current water quality and quantity conditions, problems and threats relevant to land use impacts and identify critical issues.

It is intended that the State of the Basin Report be followed by a Black Creek Watershed Plan that will propose methods for improving water quality and flooding conditions in the watershed and to ensure its long-term health and the sustainability of its resources.

Visit Our Web Site At www.blackcreekwatershed.org

Project Scope: The Black Creek watershed consists of all the land that drains to Black Creek and its tributaries. This watershed incorporates all or part of the Towns of Bethany, Batavia, Stafford, Elba, Byron, LeRoy and Bergen in Genesee County and the Towns of Riga, Ogden, Wheatland, Sweden and Chili in Monroe County. Clarendon in Orleans County and Middlebury in Wyoming County also contain small portions of the watershed.

Black Creek Watershed Symposium

The Black Creek Watershed Symposium held on March 7, 2002 was the “kick off” to the Black Creek watershed planning process. The Symposium’s agenda was designed to introduce the concept and benefits of watershed planning and to share information about the Black Creek Watershed. Speakers presented information on development history along the watershed, plant, and animal life it supports, chemical and biological health of the Creek, and active and passive recreation opportunities within the watershed.

Consultant Team

The Consultant will be the primary entity for completing the State of the Basin Report. The Consultant is a team of three professors in the Department of Earth Sciences at SUNY Brockport. The professors’ names are:

Dr. James Zollweg, Ph.D.

Geographic Information Systems
Watershed Science
Surface Water

Dr. Mark Noll, Ph.D.

Water Quality Analysis
Groundwater
Geochemistry

Dr. Whitney Autin, Ph.D.

Geologic and Environmental Mapping
Soil Science
Land Use Planning and Analysis
Environmental Geology

Schedule

Based on the contract with River Network, the report must be completed by June 27, 2003.

Important Things to Remember as we begin this process:

- *It is important to carefully designate the scope of the plan at the outset and identify very specific goals and objectives for the planning process itself -- and stick to them. It is better to have a narrow focus that is actually accomplished than lofty ambitions that are never realized because the effort becomes too cumbersome.*
- *Community support: All too often, planning efforts fail to consult the ones most affected: landowners and other stakeholders.... If community concerns are truly validated from the beginning, with stakeholder participation in setting the goals and priorities, there is a much greater likelihood of success.*

02/27/01 Coastal Conservancy

Responsibilities

The Consultant will be the primary entity for completing the State of the Basin Report. The Black Creek Watershed Coalition will work with the Consultant to prepare a detailed workplan; help gather maps, reports, master plans, photographs and other available information; facilitate contacts with municipal officials and other information providers; identify problems in and threats to the watershed; determine format details of the report in advance of writing; and review completed work.

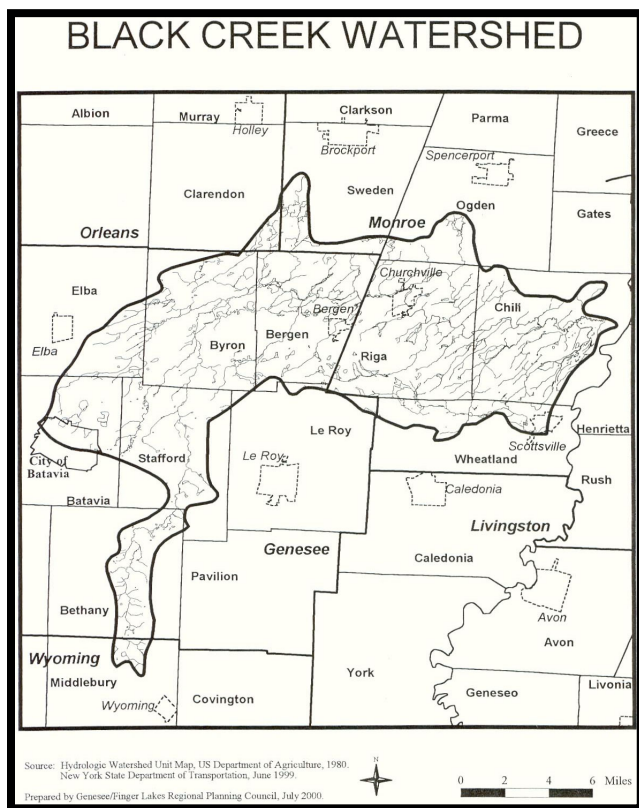
Tasks and Time Table

The following is a summary of the component tasks and a generalized schedule that shows how these tasks will be completed by June 27, 2003.

- | | |
|---|---------------------------------|
| 1. Execute Contract/Project Kickoff | (July, 2002) |
| 2. Prepare Detailed Methodology/Work Plan | (July, 2002) |
| 3. Interview, Inventory and Mapping | (August, 2002 - February, 2003) |
| 4. Prepare Draft Report for Internal Review | (January- March, 2003) |
| 5. Prepare Draft Report for Public Review | (June, 2003) |
| 6. Based on the contract with River Network, the report must be completed by June 27, 2003. | |

Come Join Us

We invite you to join the Black Creek Watershed Coalition and participate in this watershed planning effort. Who should attend: Residents, farmers, environmental groups, conservation groups, municipal officials and staff and other citizens concerned with the water quality and flooding issues in the Black Creek Watershed. Each person has something to contribute and participation from everyone is welcome. We meet once a month. For current meeting Date, Time and Location visit our web site at www.blackcreekwatershed.org, or contact: Black Creek Watershed Coalition, C/O Ms. Rochelle Bell, Environmental Planner, Monroe County Department of Planning and Development, 50 West Main Street, Suite 8100, Rochester, New York 14614, Phone: (585) 428-5464, Email: rbell@monroecounty.gov



**The Black Creek watershed
incorporates all or parts
of the following Towns**

Genesee County

Bethany
Batavia
Stafford
Elba
Byron
LeRoy
Bergen

Monroe County

Riga
Ogden
Wheatland
Sweden
Chili

Orleans County

Clarendon

Wyoming County

Middlebury.

Funding provided by River Network, a project of the U.S. Environmental Protection Agency dedicated to helping people protect and restore rivers and watersheds.

Visit Our Web Site At www.blackcreekwatershed.org